

MONTHLY MEMBERSHIP PROGRESS REPORT

LOCATION WEST VIRGINIA

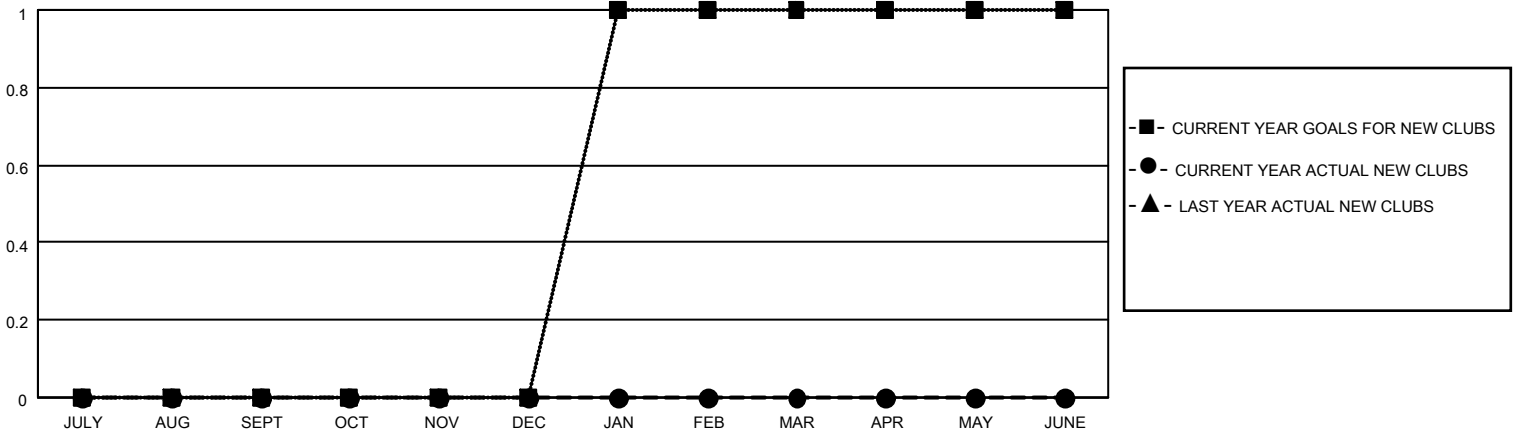
District 29 L

Results as of: 9/30/2020

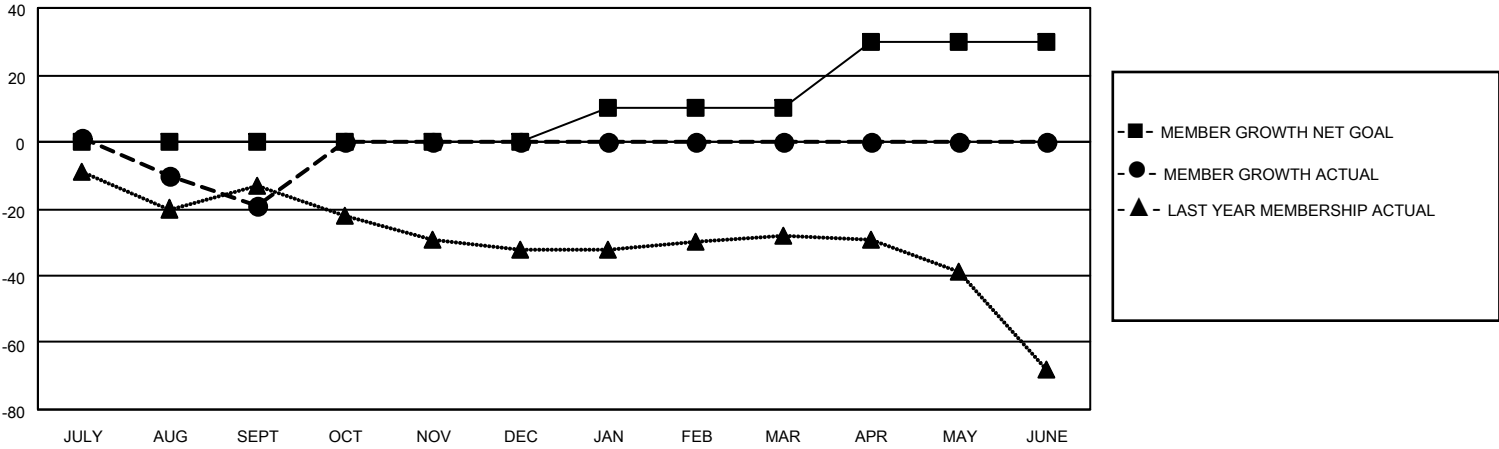
Clubs			
RESULTS FOR 2020-2021			
QUARTER	NEW CLUB GOAL	NEW CLUBS	DROPPED CLUBS
JULY/AUG/SEPT	0	0	0
OCT/NOV/DEC	0	0	0
JAN/FEB/MAR	1	0	0
APR/MAY/JUNE	0	0	0

Members			
RESULTS FOR 2020-2021			
QUARTER	MEMBER GROWTH NET GOAL	MEMBER GROWTH ACTUAL	DROPPED MEMBERS ACTUAL (including transfers)
JULY/AUG/SEPT	0	14	29
OCT/NOV/DEC	0	0	0
JAN/FEB/MAR	10	0	0
APR/MAY/JUNE	20	0	0

GOALS AND ACTUAL NEW CLUBS CUMULATIVE



GOALS AND ACTUAL MEMBERS CUMULATIVE



DROPPED CLUBS: 0	6 CLUBS OF 54 ADDED 1 OR MORE NEW MEMBERS	GENDER DISTRIBUTION
DROPPED MEMBERS	CLICK HERE FOR CUMULATIVE MEMBERSHIP DATA	MALE 744 (63.10%)
DECEASED 5		FEMALE 435 (36.90%)
CLUB CANCELLED 0		TOTAL FAMILY UNIT MEMBERS 367
OTHER 24		FAMILY MEMBERS PAYING HALF DUES 190
TOTAL 29		